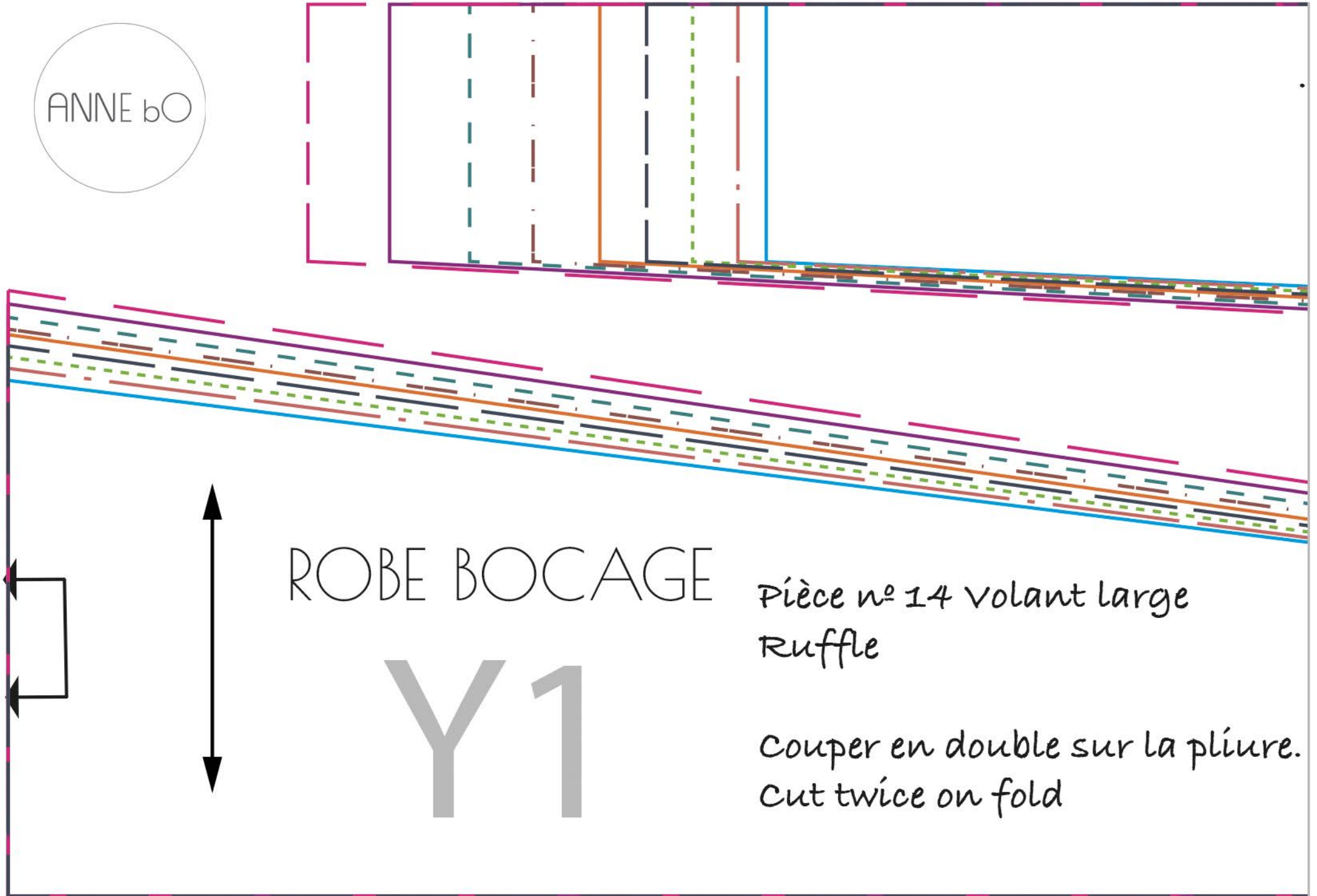


Ne couper que le long des lignes noires. Les lignes grises servent de repères pour le chevauchement des pages.

ANNE bO



ROBE BOCAGE

Y1

Pièce n° 14 volant large
Ruffle

Couper en double sur la pliure.
Cut twice on fold

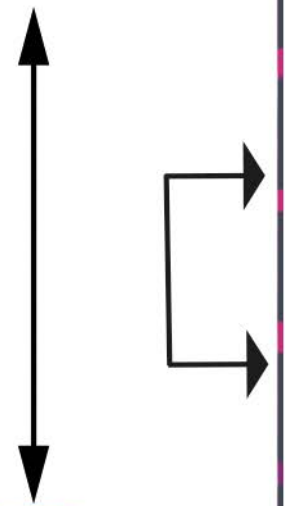
Cut only along the black lines. The grey lines are used as guides for the overlap between pages.

Ne couper que le long des lignes noires. Les lignes grises servent de repères pour le chevauchement des pages.

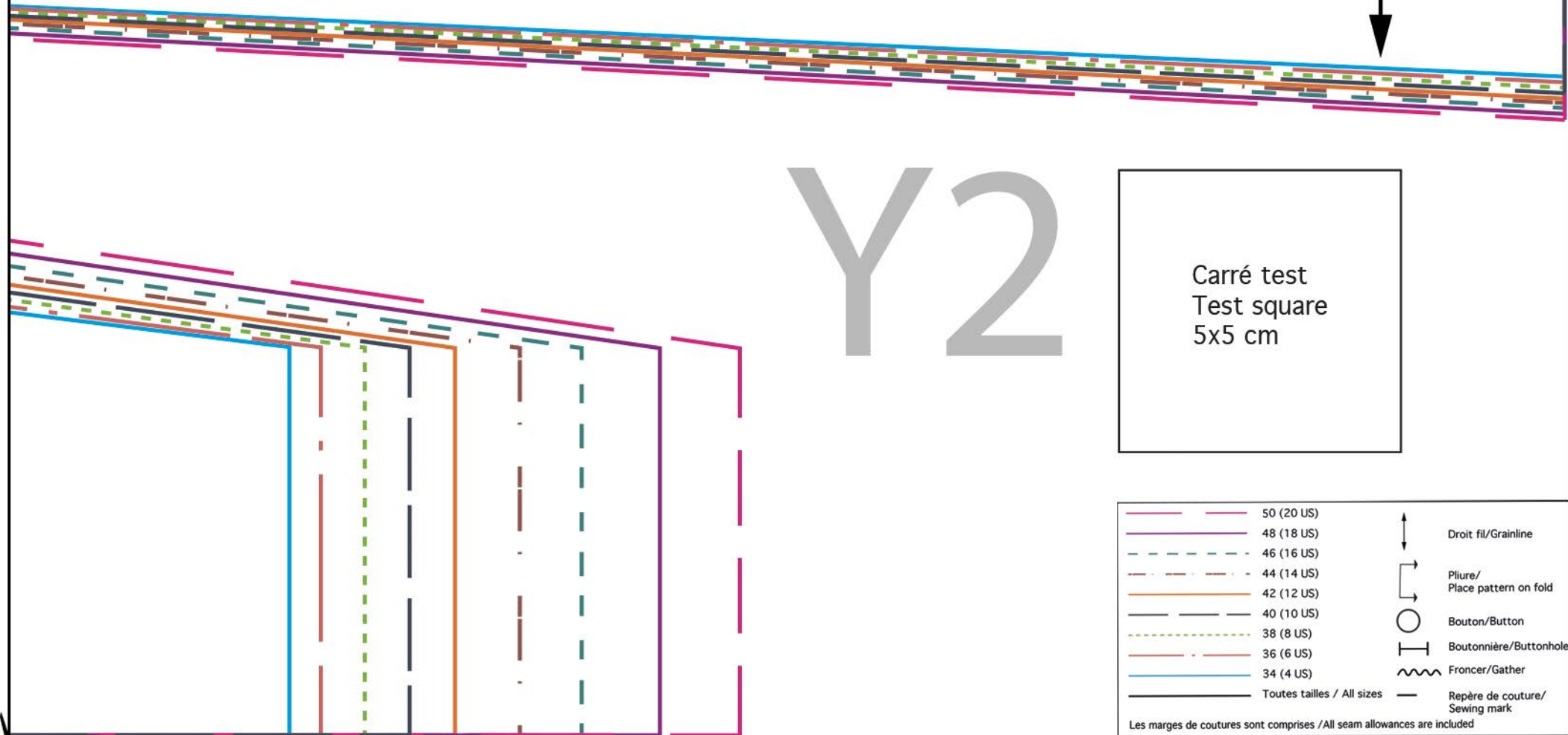
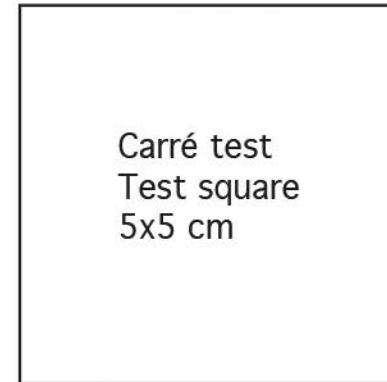
Couper en double sur la pliure
cut twice on fold

Pièce n° 15 Volant étroit
Ruffle

ROBE BOCCAGE



Y2



	50 (20 US)		Droit fil/Grainline
	48 (18 US)		Pliure/ Place pattern on fold
	46 (16 US)		Bouton/Button
	44 (14 US)		Boutonnière/Buttonhole
	42 (12 US)		Froncer/Gather
	40 (10 US)		Repère de couture/ Sewing mark
	38 (8 US)		
	36 (6 US)		
	34 (4 US)		
	Toutes tailles / All sizes		

Les marges de coutures sont comprises / All seam allowances are included

Cut only along the black lines. The grey lines are used as guides for the overlap between pages.